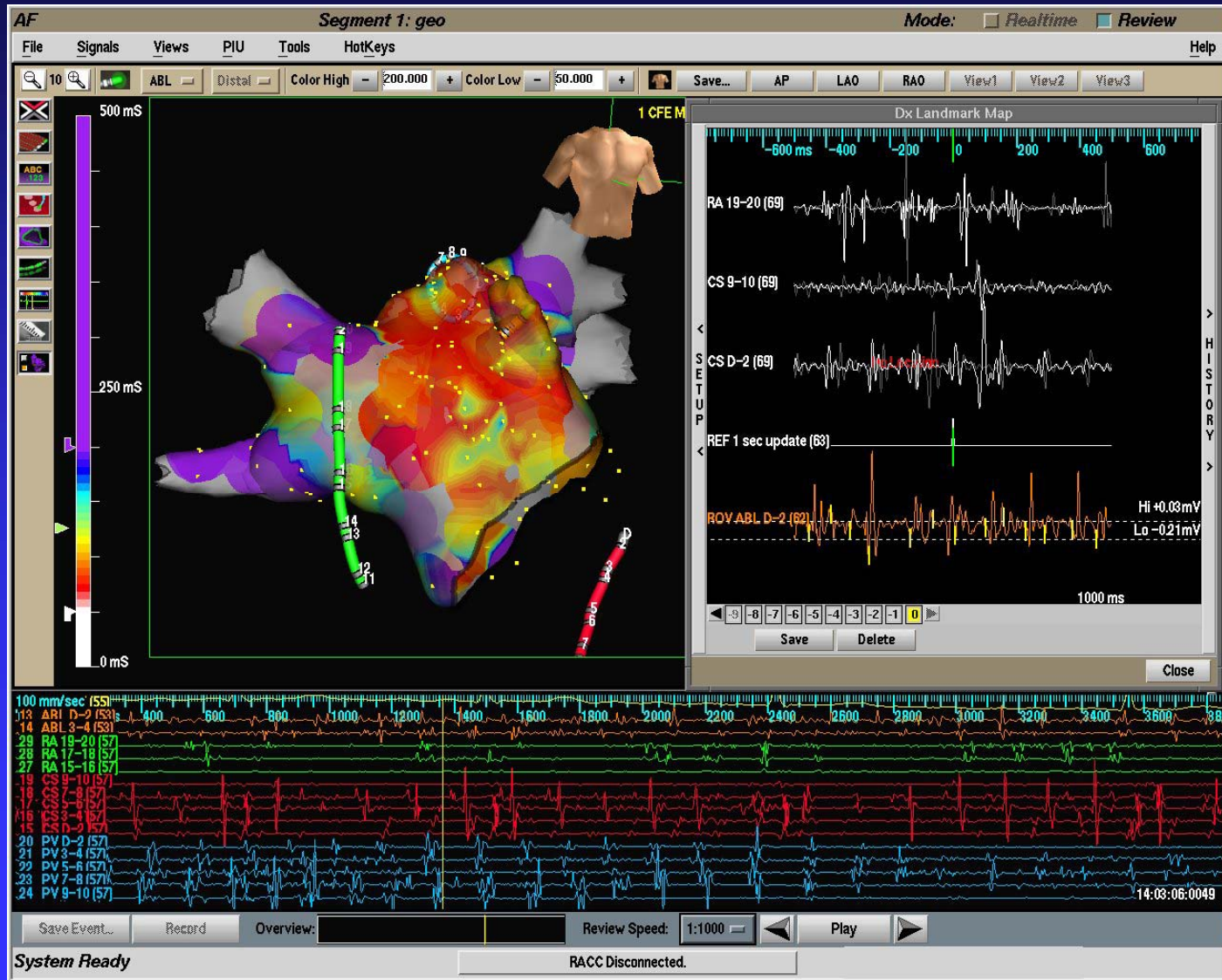


# Fractionation at Superior LA-LSPV Junction



# Patients Treated with the Robotic System

◆ Atrial Fibrillation	45 patients
◆ Atrial Flutter	9 patients
◆ AV node reentry	2 patients
◆ EP study	3 patients

\* Total number of patients treated at all clinical sites: Germany, Prague, Bordeaux.

# Remote Robotic Navigation: Early Preliminary Human Experience

- Mean Time to LA targets (6 sites) 0.8 min
- Mean Number of Lesions 26.4
- Mean Fluoro Time for Ablation 46.7 min
- Mean Total Fluoro Time 60 min
- Mean Total Procedure Time 2.2 hours
- Successful Transseptal 100%

# Results

## Outcome

- PV antral isolation achieved in all patients.\*
- Bi-directional block obtained in all patients with AFL ablation.
- At 90 days f/u:  
31/39 patients were free of atrial arrhythmia  
(5 pts on AAD's).

# Results

## Complications

- 2 patients: pericardial effusion
  - ◆ During the second manual TSP.
  - ◆ After LA ablation was completed.  
(Catheter contact: Reduce power).