

***Is there CRP in the atria?  
If so, where?***

**Atrial Fibrillation Innovation Center**

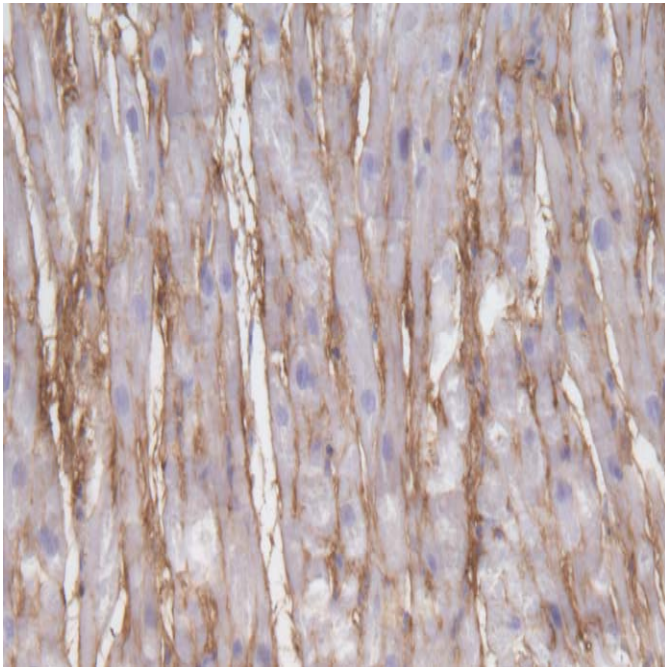
An Ohio Wright Center of Innovation



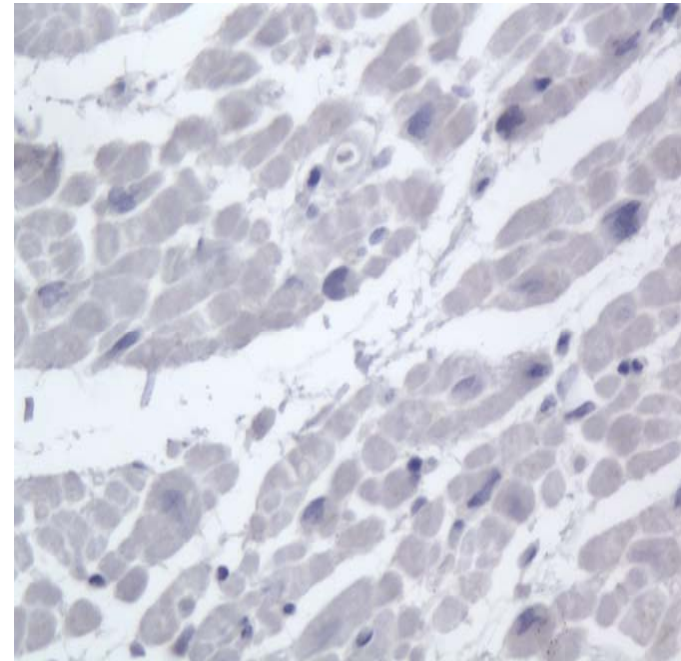
# ***Clinical characteristics of patients included in histologic analysis***

	<b>Control</b>	<b>h/o AF, SR at surgery</b>	<b>h/o AF, AF at surgery</b>	<b>Lone AF</b>
	(n = 18)	(n = 22)	(n = 25)	(n = 9)
Age, y	60 ± 4	64 ± 3	68 ± 2	58 ± 3
Male, n (%)	11 (61%)	12 (55%)	17 (68%)	9 (100%)
Hypertension, n (%)	11 (61%)	15 (68%)	19 (76%)	4 (44%)
CAD, n (%)	9 (50%)	11 (50%)	12 (48%)	
Valvular heart disease, n (%)	15 (83%)	20 (91%)	21 (84%)	
CHF, n (%)	7 (39%)	9 (41%)	11 (44%)	1 (11%)
Median CRP, mg/L	<b>3.45</b>	<b>3.45</b>	<b>3.2</b>	<b>1.65</b>

***Atrial CRP is evident in AF patients;  
at comparable plasma levels, atrial  
CRP abundance is greater in AF  
than SR***



AF, CRP 13.7 mg/L



Sinus Rhythm, CRP 11.8 mg/L

# ***Results***

- **CRP is most evident in the patients with a history of AF that were in AF at the time of surgery**
- **Correlation between plasma CRP and extent of tissue CRP staining is weak**
- **Ischemia (CAD) *and* AF can both increase atrial CRP**
- **Ongoing studies are quantifying the distribution and further evaluating the clinical features associated with CRP presence**